

**Henderson**

**MAGNUM™**



*The Dependable Ones™*

**ELLIPTICAL DEMOLITION BODY**



# MAGNUM™

## ELLIPTICAL DEMOLITION DUMP BODY

Magnum. A brute of a dump body that's designed to stand up against the most demanding tasks...from hauling riprap to moving mountains. It is designed to meet any hauling demand.

Its elliptical profile, along with 5" longsills, provide a lower center of gravity for greater stability in off-road environments, yet retains a large hauling capacity. This design resists denting so it will look better longer. Clean-out is quicker and cleaner to the point of being nearly self-cleaning.

The cross-memberless construction prevents washboarding for a smoother, faster release of material and a greater resistance to corrosion. Continuous-weld seams add strength and rigidity for a dump body that resists damage from the roughest material you can throw into it.

The Magnum is available in lengths from 12' to 20' to match your job requirements. The body carries one cubic yard of material for every running foot of length. Its capacity significantly exceeds the that of most square-bottom dump bodies, yet is more stable.

Options include partial or full-length fenders, ladders or integrated steps, cab shield, high-lift tailgate, asphalt lip and more.

**CAB SHIELD**  
OPTIONAL

**SELF-CLEANING  
TOP RAILS**

**INTEGRATED  
STEPS**  
OPTIONAL



**STEPS**

Steps integrated into fenders.  
OPTIONAL

**FOLD-UP SIDE LADDER**

OPTIONAL

**PROTECTIVE FENDERS**

FULL OR PARTIAL

Sloped to shed dirt.  
OPTIONAL

**FULL DEPTH  
CORNER POSTS**

Extra-wide posts  
contribute to the extreme  
durability of the Magnum.

**TAILGATE LATCHES**

Flame-cut steel latches are mounted to 1/4" steel reinforcing plates attached to the body by continuous-seam welding for extra strength and reliability.



**HIGH-LIFT TAILGATE**  
OPTIONAL



**TELESCOPIC HOIST**

Trunnion-mounted telescopic hoist has nitrided cylinder rod for extended life. Connecting pivots have replaceable greaseless bushings. Two-year warranty. *(No doghouse.)*



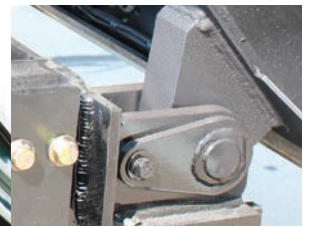
**HIGH-LIFT TAILGATE**

Operated by twin air cylinders for reliable opening and closing. Cylinders are protected from the weather and stray materials by heavy steel guards, which are designed to shed debris. Tailgate also pivots at top of rear bolster for conventional dumping. **OPTIONAL**



**UNIBODY DESIGN**

Cross-memberless for far fewer corrosion points.



**REAR HINGE ASSEMBLY**

Constructed of 6" x 8" x 1/2" structural angle to reduce twisting. Stainless steel 2" pins connect through 2-1/2" hinge blocks with greaseless composite bushings. *(Greaseable pins optional.)*

Available in 12' to 20' lengths



**ELLIPTICAL DESIGN**

Self-cleaning design presents a lower center of gravity for stability under all conditions. Load dumps quickly, smoothly and completely.

## MAGNUM DIMENSIONS & CAPACITY CHART

LENGTH	HEIGHTS (.in)			BODY WIDTH	CAPACITY (cu. yd.) SIDES/ENDS	TRUCK CHASSIS CT	TYPE	HOIST CLASS (NTEA)	CAPACITY (Tons)
	SIDES	HEAD	TAILGATE						
12'	50"	61"	56"	86"/96"	12.0/13.6	96"	M110-5.5-3	80	33.9
13'	50"	61"	56"	86"/96"	13.0/14.7	108"	M120-5.5-3	80	29.4
14'	50"	61"	56"	86"/96"	14.0/15.9	120"	M130-5.5-3	90	28.5
15'	50"	61"	56"	86"/96"	15.0/17.0	132"	M140-5.5-3	90	27.6
16'	50"	61"	56"	86"/96"	16.0/18.1	144"	M150-6.5-3	110	31.4
17'	50"	61"	56"	86"/96"	17.0/19.3	156"	M160-6.5-3	110	29.1
18'	50"	61"	56"	86"/96"	18.0/20.4	168"	M170-6.5-4	110	27.9
19'	50"	61"	56"	86"/96"	19.0/21.3	180"	M170-6.5-4	110	27.9
20'	50"	61"	56"	86"/96"	20.0/22.3	192"	M170-6.5-4	110	27.9

### UNIBODY DESIGN

One-piece sides, floor and headsheet are continuous seam-welded for extra strength and rigidity. Longitudinals are formed of 7-gauge grade 50 steel with 5" depth for a low center of gravity. All seams are continuous-welded for superior unibody construction. See *Magnum Material Availability chart below for steel specifications.*

- A formed doghouse extends a maximum of 13" into the body. Optional front-mount doghouse is available.
- Three 7-gauge sloped horizontal braces are flush with perimeter boxing and are continuous welded.
- **OPTIONAL** - High-lift tailgate is operated from the cab by twin air cylinders. Tailgate also pivots at top of rear bolster for conventional operation.
- 3/4" latch hooks with 3/8" latch plates.
- 1-1/4" diameter upper and lower pins.
- Double-acting 3-1/4" x 8" air cylinder tailgate release uses an over-center latch and operates from cab. Tailgate remains latched even if air pressure is lost. Pivot points include stainless steel bushings to reduce seizing.

### HOIST

Trunnion-mounted with largest stage at the bottom. Places point of lift at bottom of body and improves body stability.

- Nitrided process creates a surface that is a homogenous part of the cylinder, not a layer to crack, chip and rust.
- Trunnion collar is 5° oscillating type.
- Connecting pivots have replaceable greaseless bushings.
- 2-year cylinder warranty.

### REAR HINGE ASSEMBLY

Constructed of 6" x 8" x 1/2" structural steel angle with stainless steel 2" diameter hinge pins connecting through 2-1/2" hinge blocks incorporating greaseless bushings.

### BODY PREPARATION

- Entire body is chemically cleaned with a phosphate solution before priming.
- Primed with a high-quality primer.

### LIGHT PACKAGES

- Stop/turn/tail lights are rubber-mounted in rear corner posts.
- I.I.C. and rear clearance lights with reflectors are included.
- All lights are rubber-mounted, shock-resistant and feature a one-piece wiring harness.



### OPTIONS

- Asphalt body style
- Front-mount hoist cylinder (eliminates doghouse)
- High-lift air operated tailgate
- Cab shield
- Additional horizontal tailgate bracing
- Asphalt lip
- Between-the-frame hydraulic tank
- Rubber mounting pads
- Side ladder
- Coal chute
- Full-length fenders
- LED light kit

### MAGNUM MATERIAL CHART

	3/16" AR400	1/4" AR400
FLOOR	■	■
SIDES/HEADSHEET	■	■
TAILGATE	■	■

\*AR400 Brinell hardness approx. 200,000 PSI tensile.

### REAR CORNER POSTS

1/4" steel, 4-3/4" x 12" full-depth corner posts are continuous-welded to the full-width rear apron. The joint is further reinforced with a 1/4" steel plate to help prevent flexing in this critical area and strengthens the latch assembly.



### COMPLETE MUNICIPAL SNOW & ICE CONTROL SOLUTIONS

PLOWS • WINGS • UNDERBODY SCRAPERS • SAND & SALT SPREADERS • STANDARD & PRECISION SPINNERS • DUMP BODIES • COMBINATION (MUNICIPAL) BODIES  
BRINE PRODUCTION & MANAGEMENT SYSTEMS • ANTI-ICE SYSTEMS • PRE-WET SYSTEMS • SLURRY SYSTEMS • COMPLETE TURNKEY PACKAGES



© Henderson Products, Inc., A division of Douglas Dynamics, L.L.C., reserves the right in pursuit of continuous product improvement to change specifications used herein. As a *custom manufacturer* of truck bodies, truck equipment and brine systems, additional product options may be available that are not shown here.



1085 S. Third Street, Manchester, IA 52057  
Toll Free: (800) 359-4970  
[www.HendersonProducts.com](http://www.HendersonProducts.com)

Sourcewell   
CONTRACT: 080818-HPI



HP-024 11/20